

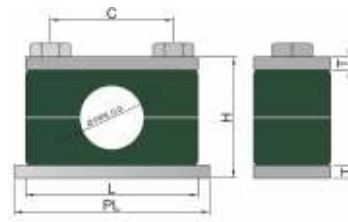
PIPE CLAMPS

Standard Pipe Clamps / Light Series (DIN 3015-1)

These pipe clamps are cost effective and used mostly for general applications, and are supplied as Individual Pipe Clamp with welding plate, Individual Pipe Clamp without welding plates and Multilayer Construction.

Features of Standard Series Pipe Clamps

- Designed as per DIN-3015 part-1
- Sizes ranging from 6 MM O.D. up to 50.8 MM O.D.
- W.P. range up to 1500 PSI (100 BAR) for application in Steel / stainless steel piping system



GROUP	PIPE OD Dia	PL	L	C	T	H	BOLT SIZE
1	4	43	37	20	3	33	M6x30
	6						
	6.4						
	8						
	9.5						
	10						
2	12	48	42	26	3	39	M6x35
	12.7						
	13.5						
	14						
	15						
3	16	56	50	33	3	42	M6x40
	17.2						
	18						
	19						
	20						
	21.3						
4	22	65	59	40	3	48	M6x45
	25						
	26.9						
5	28	77	71	52	3	64	M6x60
	30						
	32						
	33.7						
	35						
	38						
6	40	92	86	66	3	72	M6x70
	42						
	44.5						
	48.3						
	50.8						

Jaws Material Code

Polypropylene - PP
 Poly Amide - PA
 Aluminum - AL

Plate Material Code

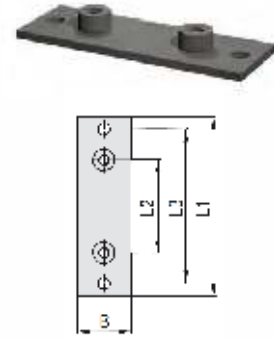
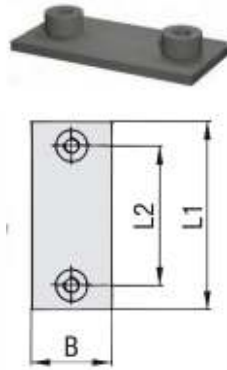
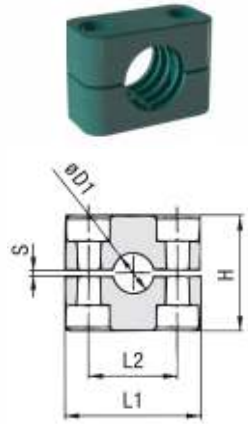
Steel - No Code
 SS316 - SS

Jaws Order Code

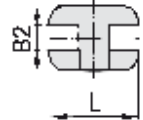
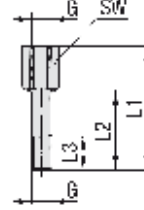
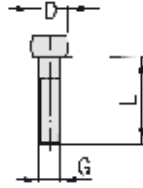
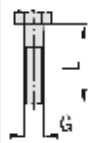
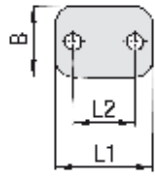
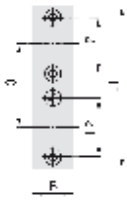
Group-Material Code-
 Pipe OD-Part Code

Eg: For Jaws

1-PP-06-JPCL Indicates
 6MM OD PP Clamp Halves
 Standard Series



GROUP	PIPE OD Dia	2 Clamp Halves (Jaws) - JPCL					Single Weld Plate - BP		Elongated Weld Plate - EBP			
		L1	L2	H	S	WIDTH	L1	L2	L1	L2	L3	Mounting Hole Dia
1	6	37	20	27	0.4 MIN	30	BP1		EBP1			
	6.4						43	20	64	20	50	6.5
	8											
	9.5											
	10											
	12											
2	12.7	42	26	33	0.6 MIN	30	BP2		EBP2			
	13.5						48	26	70	26	56	6.5
	14											
	15											
	16											
	17.2											
3	18	50	33	36	0.6 MIN	30	BP3		EBP3			
	19						56	33	78	33	64	6.5
	20											
	21.3											
	22											
4	25	59	40	42	0.6 MIN	30	BP4		EBP4			
	26.9						65	40	87	40	73	6.5
	28											
5	30	71	52	58	0.8 MIN	30	BP5		EBP5			
	32						77	52	100	52	86	6.5
	33.7											
	35											
	38											
6	40	86	66	66	0.8 MIN	30	BP6		EBP6			
	42						92	66	115	66	100	6.5
	44.5											
6	48.3	86	66	66	0.8 MIN	30	92	66	115	66	100	6.5
	50.8											



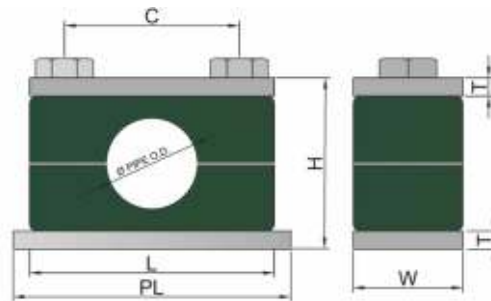
		TWIN WELD PLATE - TBP			TOP PLATE - TP			HEX BOLT - HB	SOCKET HEAD BOLT SB				STACKING BOLT - STB				STACKING PLATE - SP	
GROUP	PIPE OD DIA	L1	L2	L3	L1	L2	HOLE DIA	DIN931/933	DIN 912			L1	L2	L3	SW	L	B2	
								G X L	G X L	D	S							
1	6	TBP1			TP1			HB1	SB1				STB1				SP1	
	6.4																	
	8																	
	9.5	77	20	37	37	20	7	M6 X 30	M6 X 20	11	0.8	34	20	12 MIN	11	37	11.1	
	10																	
	12																	
2	12.7	TBP2			TP2			HB2	SB2				STB2				SP2	
	13.5																	
	14																	
	15	86	26	44	42	26	7	M6 X 35	M6 X 25	11	0.8	40	25	12 MIN	11	42	11.1	
	16																	
	17.2																	
18																		
3	19	TBP3			TP3			HB3	SB3				STB3				SP3	
	20																	
	21.3	102	33	52	50	33	7	M6 X 40	M6 X 30	11	0.8	44	30	12 MIN	11	50	11.1	
	22																	
	25																	
4	26.9	TBP4			TP4			HB4	SB4				STB4				SP4	
	28	120	40	60	59	40	7	M6 X 45	M6 X 35	11	0.8	48	35	12 MIN	11	59	11.1	
	30																	
5	32	TBP5			TP5			HB5	SB5				STB5				SP5	
	33.7																	
	35																	
	38	163	52	75	71	52	7	M6 X 60	M6 X 50	11	0.8	64	50	12 MIN	11	71	11.1	
	40																	
	42																	
6	44.5	TBP6			TP6			HB6	SB6				STB6				SP6	
	48.3	178	66	90	86	66	7	M6 X 70	M6 X 60	11	0.8	73	60	12 MIN	11	86	11.1	
	50.8																	

Heavy Series Pipe (DIN 3015-2)

Tube clamps are Widely used for Supporting Piping System in high pressure applications, and are supplied as Individual Pipe Clamp with welding plate, Individual Pipe Clamp without welding plates and Multilayer Construction.

Features of Heavy Series Pipe / Tube Clamps

- Designed as per DIN-3015 part-2
- Sizes ranging from 6 MM O.D. up to 219 MM O.D.
- W.P. range above 1500 PSI (100 BAR) for application in Steel / stainless steel piping system.

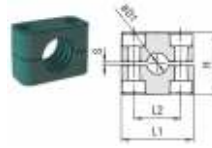


GROUP	PIPE OD Dia	L	C	H	W	PL	T	BOLT SIZE
1	6	55	33	48	30	70	8	M10 x 45
	6.4							
	8							
	9.5							
	10							
	12							
	12.7							
	13.5							
	14							
	15							
	16							
	17.2							
2	18	70	64.0	76	30	85	8	M10 x 60
	19							
	20							
	21.3							
	22							
	25							
	26.9							
3	28	85	60	76	30	100	8	M10 x 70
	30							
	33.7							
	35							
4	38	115	90	117	45	140	10	M12 x 100
	42							
	42							
	48.3							
	50.8							
5	60.3	152	122	140	60	180	10	M16 x 130
	63.5							
	65							
	70							
6	73	206	168	197	80	226	15	M20 x 190
	76.1							
	88.9							
	102							
7	114	251	205	230	91	270	15	M24 x 225
	127							
	133							
	141							
	152							
	168							

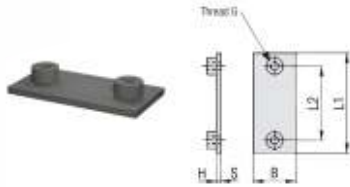
Jaws Material Code
 Polypropylene - PP
 Poly Amide - PA
 Aluminum - AL

Jaws Order Code
 Group-Material Code-
 Pipe OD-Part Code

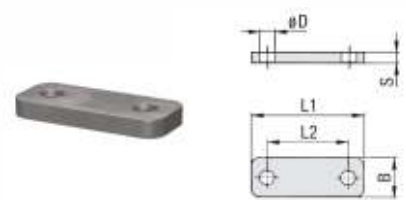
Eg: For Jaws
 1-PP-06-JPCH Indicates
 6MM OD PP Clamp Halves
 Heavy Series



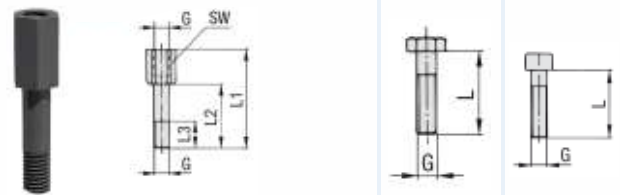
GROUP	PIPE OD - Dia D1			JAWS - JPCH				
	MM	INCH OD	INCH NB	L1	L2	H	S	WIDTH
1	6	1/4"		55	33	32	0.6 MIN	30
	6.4							
	8							
	9.5							
	10	3/8"						
	12							
	12.7	1/2"						
	13.5		1/4"					
	14							
	15							
	16							
	17.2		3/8"					
18								
2	19	3/4"		70	45	48	0.6 MIN	30
	20							
	21.3		1/2"					
	22							
	25	1"						
	26.9		3/4"					
	28							
30								
3	30			85	60	80	0.6 MIN	30
	32	1 1/4"						
	33.7							
	35							
	38							
	42		1 1/4"					
4	38	1 1/2"		115	90	89	2 MIN	45
	42							
	48.3		1 1/2"					
	50.8	2"						
	55							
	57							
	60.3		2"					
	63.5							
	65							
	70							
5	70			152	122	120	2 MIN	60
	73		2 1/2"					
	75	3"						
	76.1							
	80							
	88.9		3"					
6	102	4"		206	168	167	2 MIN	80
	108							
	114.3		4"					
	127	5"						
	133							
7	140		5"	251	205	200	3 MIN	91
	152	6"						
	168		6"					



GROUP	BOTTOM PLATE [BPH]					PART NO.	DOUBLE BOTTOM PLATE [DBPH]					PART NO.
	L1	L2	G	S	B		L1	L2	B2	S	B	
1	70	33	M10	8	30	BPH1	70	33	30.5	8	60	DBPH1
2	85	45	M10	8	30	BPH2	85	45	30.5	8	60	DBPH2
3	100	60	M10	8	30	BPH3	100	60	30.5	8	60	DBPH3
4	140	90	M12	10	45	BPH4	140	90	46	10	90	DBPH4
5	180	122	M16	10	60	BPH5	180	122	61	10	120	DBPH5
6	226	168	M20	15	80	BPH6	226	168	81	15	160	DBPH6
7	270	205	M24	15	91	BPH7	270	205	9	15	180	DBPH7



GROUP	ELONGATED BOTTOM PLATE [EBPH]					PART NO.	TOP PLATE [TPH]					PART NO.
	L1	L2	L3	S	D2		L1	L2	D Dia	S	B	
1	113	33	30.5	8	13	EBPH1	55	33	11	8	30	TPH1
2	125	45	30.5	8	13	EBPH2	70	45	11	8	30	TPH2
3	140	60	30.5	8	16	EBPH3	85	60	11	8	30	TPH3
4	187	90	46	10	21	EBPH4	115	90	14	10	45	TPH4
5	238	122	61	10	26	EBPH5	152	122	18	10	60	TPH5
6	309	168	81	15	31	EBPH6	206	168	22	15	80	TPH6
7	370	205	91	15	31	EBPH7	251	205	26	15	91	TPH7



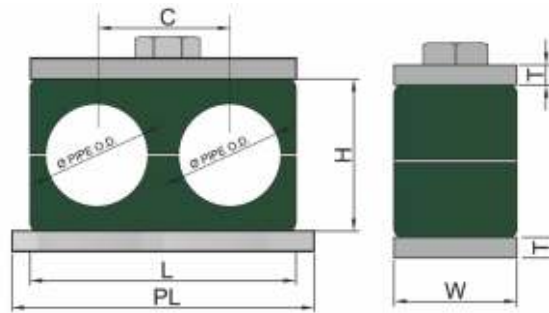
GROUP	STACKING PLATE					PART NO.	STACKING BOLT					PART NO.	HEX BOLT	SOCKET HEAD BOLT
	L1	L2	B1	B2	S		G	L1	L2	L3	SW		G X L	G X L
1	56	13	30	15.2	8	SPH1	M10	49	25	15	15	SBH1	M10 X 45	M10 X 30
2	70	32	30	15.2	8	SPH2	M10	65	40	15	15	SBH2	M10 X 60	M10 X 40
3	85	40	30	15.2	8	SPH3	M10	77	51	15	15	SBH3	M10 X 70	M10 X 50
4	116	68	45	17.2	10	SPH4	M12	110	82	18	17	SBH4	M12 X 100	M12 X 80
5	153	96	60	22	10	SPH5	M16	144	110	24	21	SBH5	M16 X 130	
6	206	130	80	28	15	SPH6	M20	200	150	30	27	SBH6	M20 X 190	
7	251	166	90	31	15	SPH7	M24	240	180	50	30	SBH7	M24 X 220	

Twin Series Pipe (DIN 3015-3)

Tube clamps - DIN 3015 Part 3 are Designed to Clamp 2 Identical Pipes / Tubes to the Piping Systems. These pipe / tube clamps have thick plates & heavy bolts to resist High Pressure Piping Application. These tube clamps can be installed and operated without any hassle and they provide its users a long working life.

Features of Twin Series Pipe / Tube Clamp

- Sizes ranging from 6 MM O.D. up to 50.8 MM O.D.
- Can be availed along with Multilayer, Welding plates, Rail Nuts, etc.
- Capable of resisting W.P. up to 3500 psi (300 Bar)
- Available in different construction type including Rubber Inlay Types & many more



GROUP	PIPE OD Dia	PL	L	C	T	H	BOLT SIZE
1	6	42	36	20	3	27	M6 X 35
	6.4						
	8						
	9.5						
	10						
	12						
2	12.7	59	53	29	5	27	M8 X 35
	13.5						
	14						
	15						
	16						
	17.2						
3	18	74	67	36	5	37	M8 X 45
	19						
	20						
	21.3						
	22						
4	25	86	80	45	5	40	M8 X 50
	26.9						
	28						
5	30	112	106	56	5	53	M8 X 60
	32						
	33.7						
	35						
	38						
	40						
42							

Multilayer Pipe Clamps (DIN 3015 Part 1, 2 and 3)

Tube clamps For Securing a tool to a multi-piece panel assembly. They can clamp vertically in multiple layers up to any numbers of layers. Available in Different Sizes, we can provide as per the requirements of our customers.

Features of Multilayer Pipe / Tube Clamps

- Multilayer Pipe – Tube clamps are specially designed for light duty / heavy duty as well as twin series clamps
- Sizes ranging from 6 MM O.D. up to 219 MM O.D.

How to Order

